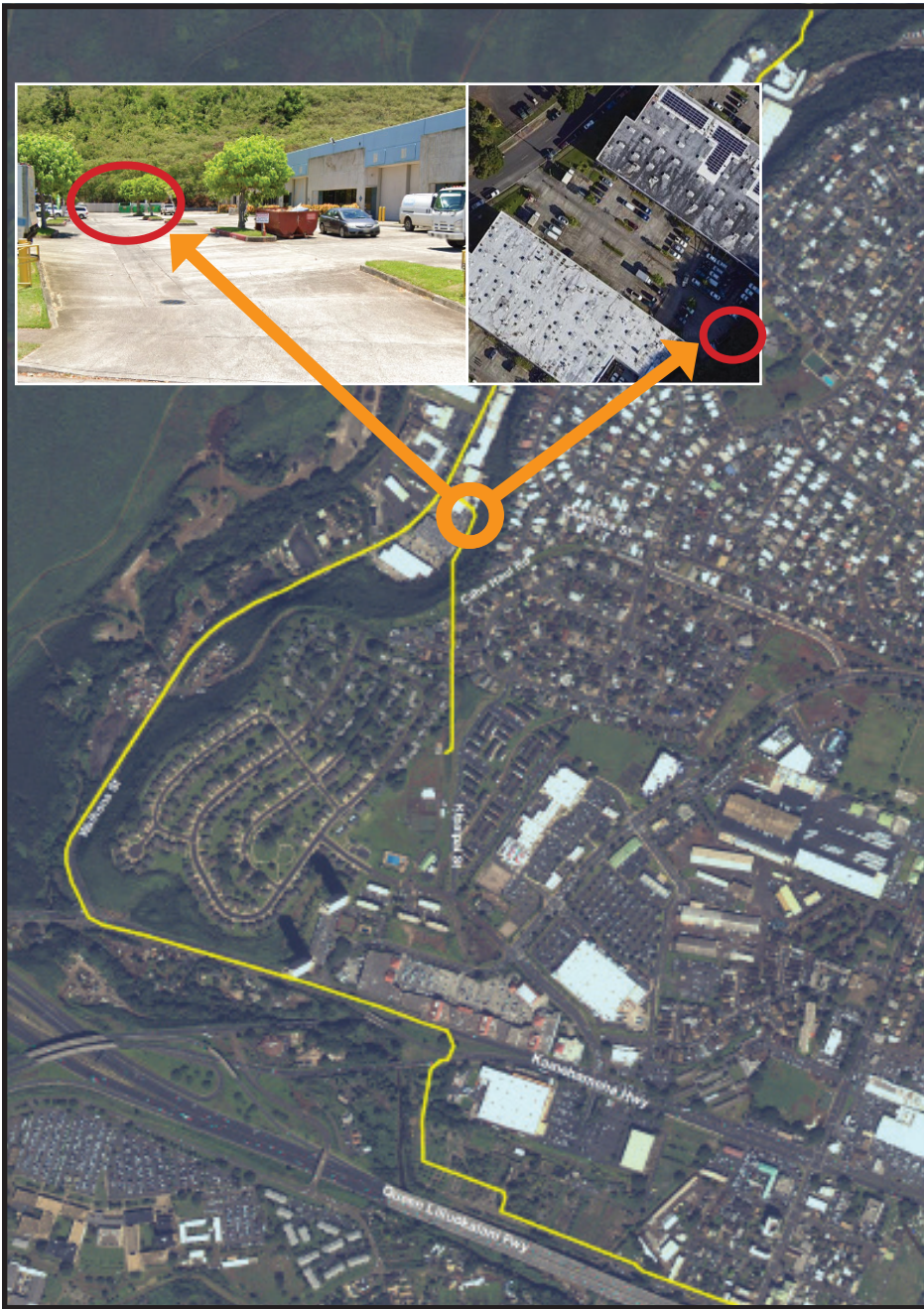


CONSTRUCTION NOTICE 8

WAIAWA NAVY WATERLINE PROJECT



FULL PROJECT ROUTE:
Waihona St. to Lehua Ave.



PHASE LOCATION:
Behind Hawaii Business Park



PHASE START DATE:
August 4, 2020



CONSTRUCTION HOURS:
Monday - Friday
8:30 a.m. - 3:30 p.m.



WHAT TO EXPECT:

- Temporary traffic delays
- Temporary lane closures
- Temporary access closures
- Short-term street parking and lane restrictions
- Heavy equipment and workers on the roadway
- Noise, dust, and vibration



PHASE COMPLETION:
2 months

Hawaiian Dredging Construction Company (HDCC), Inc., on behalf of the Naval Facilities Engineering Command (NAVFAC) Hawaii, started on the Waiawa Navy Waterline Project for Joint Base Pearl Harbor-Hickam on August 12, 2019.

As of August 4, this phase of the project will involve construction behind Voyager Car Sales in Hawaii Business Park. Businesses and motorists near the project site are asked to observe all traffic signs, anticipate/plan for possible delays, and drive with caution. Project updates will be available, 24/7, at www.waiawanavywaterline.com. All interested members of the public may sign up at the website to receive automatic project updates. HDCC and NAVFAC Hawaii will make every effort to provide timely project information to the local community throughout this project.

Please direct all questions or concerns during normal business hours to the Waiawa Navy Waterline Project Team, (808) 392-1617, or email info@waiawanavywaterline.com.

CN#8
07/28/2020